




# Introduction to Trustee Area Study Session

DECEMBER 14, 2021

## ▶ PURPOSE OF TODAY'S STUDY SESSION

- 
- Discuss legal requirements and factors to be considered in redistricting

- Review 2020 Census Data for the District:
  - How the population/demographics has changed between 2010 and 2020

- Review Current Trustee Areas and 4 New Scenarios

- Ask Questions of the Demographer and Discuss Next Steps

## ▶ REVIEW OF LEGAL REQUIREMENTS

### **U.S. Constitution (14th Amendment)**

- Supreme Court cases have held that the 14th Amendment of the U.S. Constitution requires that all districts within a political jurisdiction have “substantial equality of population.”
- This is calculated as total population, regardless of age or eligibility to vote.
- How much population deviation is allowable? The Supreme Court has indicated that a deviation of up to 10 percent is only a minor deviation and is not enough to show a violation of the 14th Amendment.

## ▶ REVIEW OF LEGAL REQUIREMENTS

### **California Education Code Section 5019.5**

- Following each 10-year federal census, school districts are required to adjust their trustee area boundaries such that they are nearly equal in population.
- This must be completed prior to March 1 in the year after the census data is released (i.e. by February 28, 2022).
- This year the census data was released late, causing the timeline to be compressed.

## ▶ REVIEW OF LEGAL REQUIREMENTS

### **Federal Voting Rights Act of 1965 (VRA)**

- VRA prohibits election systems and practices that dilute the voting power of racial, ethnic, and language minorities.
- Previously Used Techniques that Violate the VRA:
  - Concentrating as many people from a minority group as possible into as few districts as possible to dilute voting effectiveness
  - Dividing minority populations among multiple districts to dilute their voting effectiveness
- VRA requires that cohesive minority groups that have difficulty electing candidates of choice be provided the opportunity for effective representation.

## ▶ SOME REDISTRICTING CRITERIA\*

- Compact and contiguous trustee areas (no “gerrymandering”)
- Easily identifiable boundaries—man-made and geographic features
- Maintain and respect communities of interest, as possible

*\*More criteria will be discussed during the Study Session*

## ▶ WHAT ARE COMMUNITIES OF INTEREST

**Communities of interest are areas where people share social and economic interests, such as:**

- Identifiable neighborhoods and communities
- Areas with similar racial and ethnic composition and cultural identities
- Areas with common social and civic networks—schools, churches, homeowners' associations, retirement communities



▶ **TRUSTEE AREA  
SCENARIOS**

PALM SPRINGS UNIFIED  
SCHOOL DISTRICT

**December 14, 2021**



**COOPERATIVE  
STRATEGIES**  
ASSESS • PLAN • FUND • BUILD



▶ CENSUS AND TRUSTEE AREA ADJUSTMENT  
EDUCATION CODE SECTION 5019.5

- After every decennial census, California school districts must:
  1. Review the new census data to determine if the school district's trustee areas are still within the allowable population variance
  2. Approve of adjustments to trustee area boundaries to bring them within the maximum population variance of 10% or less [10% established by case law and industry practice]
- 2020 census data was released on September 27, 2021
- *Adjustments to trustee areas must be approved by the Board no later than February 28, 2022*



► DRAFT TIMELINE

DATE	ACTIVITY
<b>November 23, 2021</b>	<b>Board Meeting: Presentation on Evaluation of Existing Voting Areas Review Initial Scenarios</b>
November - December	Cooperative Strategies revises scenarios based on Board and Public Input
<b>December 14, 2021</b>	<b>Board Meeting: Review Revised and/or Additional Scenarios</b>
December - January	Cooperative Strategies revises scenarios based on Board and Public Input
<b>January 11, 2022</b>	<b>Board Meeting: Adopt Final Trustee Areas</b>
<b>January - February</b>	Cooperative Strategies sends Final Trustee Area Map to the County Registrars of Voters.

*\*Possible Community Input meeting before the board adopts final trustee areas*

## ▶ CONSIDERATIONS IN TRUSTEE AREAS



Each area shall contain nearly equal number of inhabitants



Follow man-made and natural geographic features, as much as possible



Drawn to comply with the Federal Voting Rights Act



Respect incumbency, if possible



Compact and contiguous, as much as possible

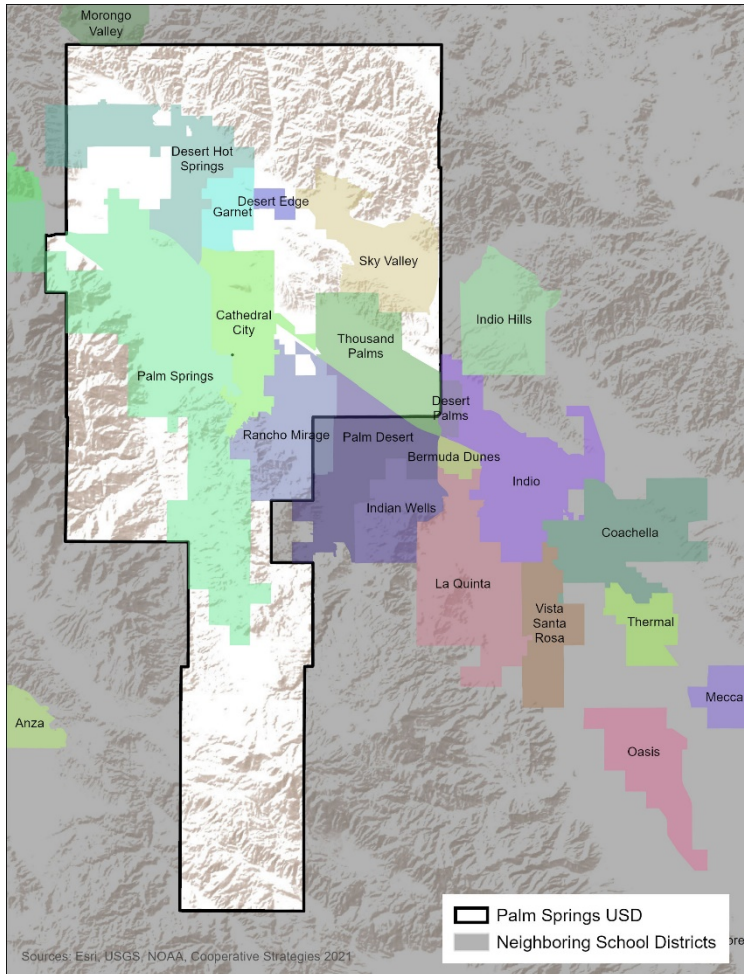


Other local considerations (i.e., school boundaries, locations of school sites)



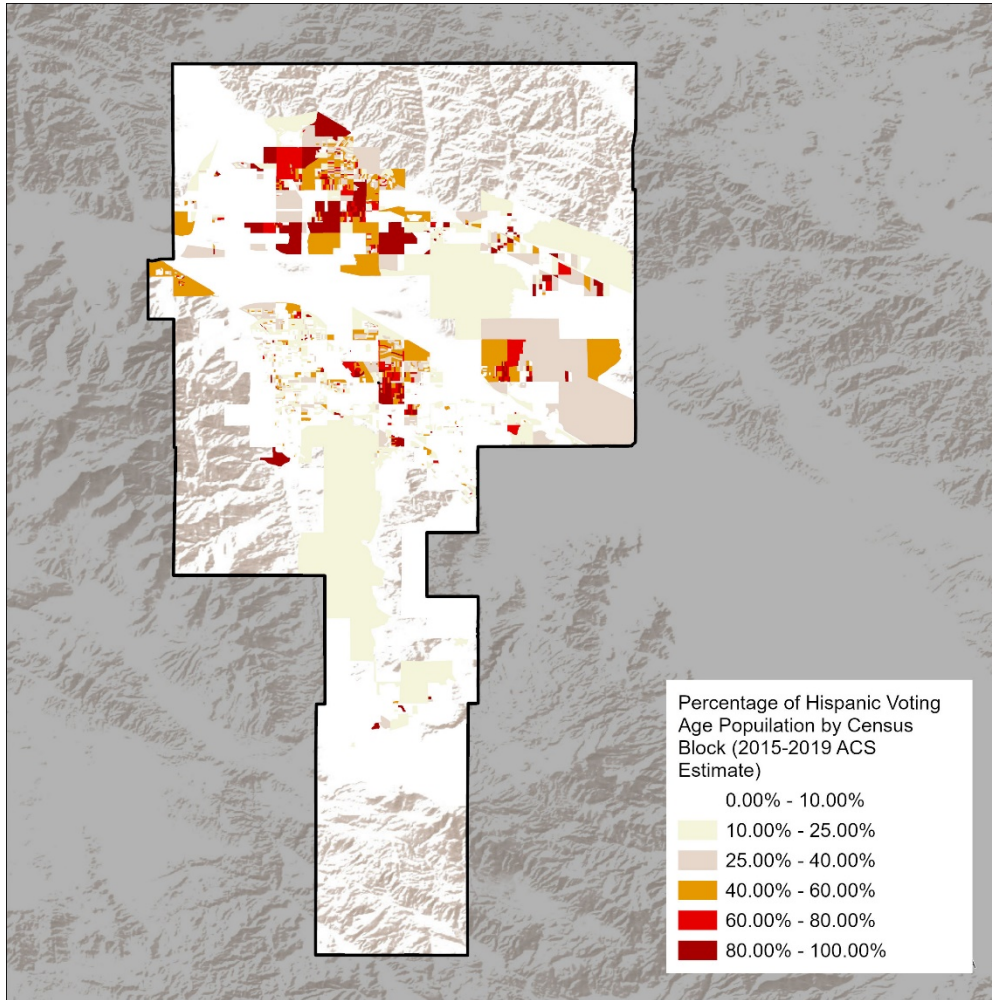
Respect communities of interest, as much as possible

## ► DISTRICT DEMOGRAPHICS 2020 CENSUS DATA



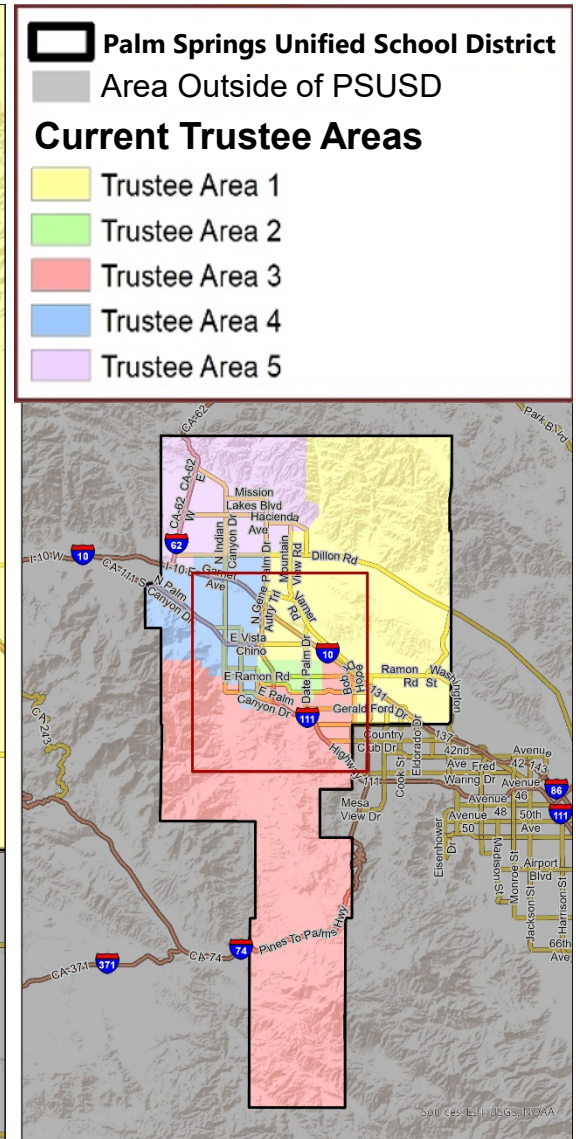
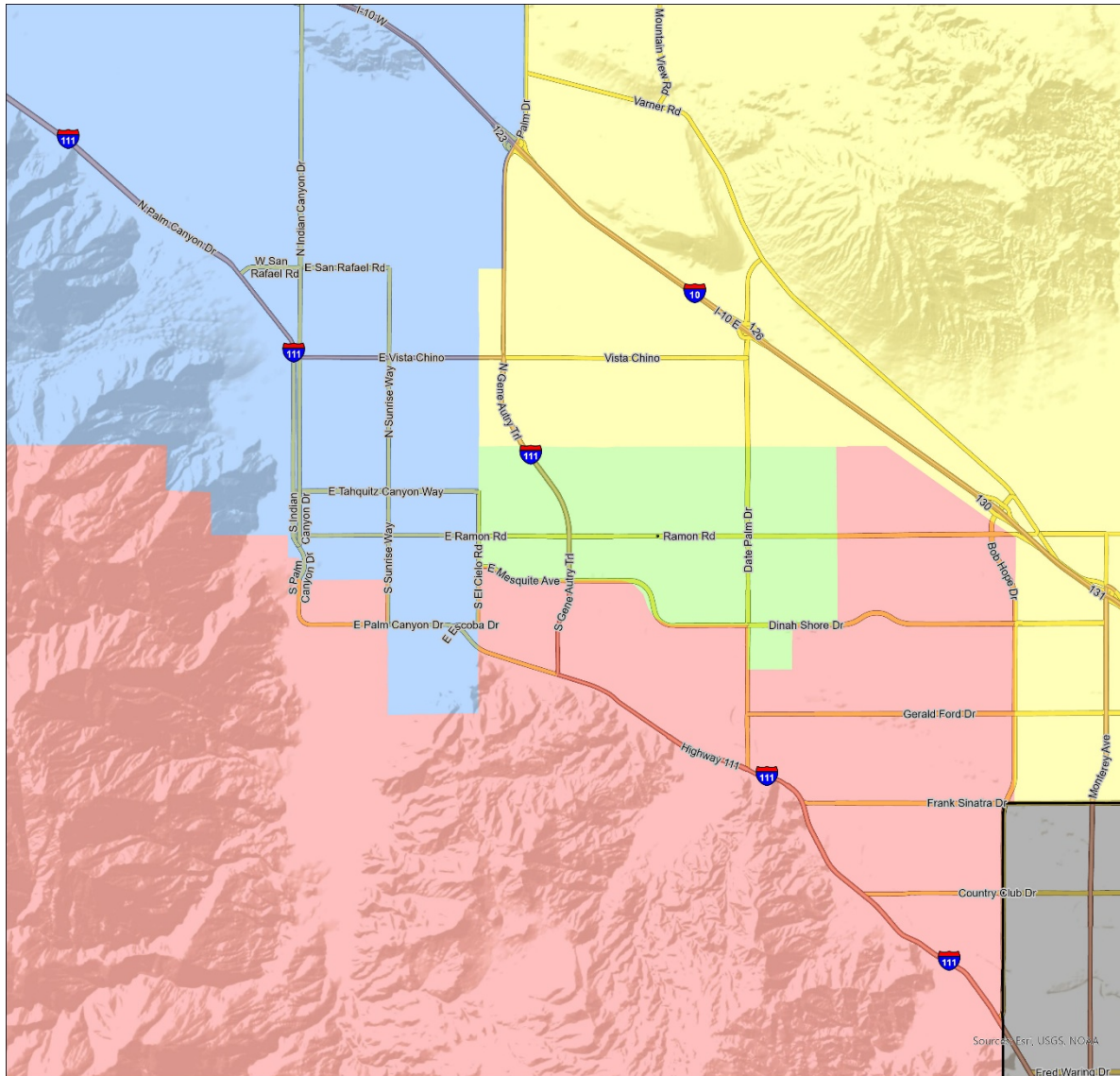
Population	Total Population		Age 18 +	
	Total	%	Total	%
Hispanic/Latino	80,898	46.0%	56,940	39.7%
White	74,129	42.2%	69,712	48.6%
Black/ African American	6,580	3.7%	5,148	3.6%
American Indian/Alaska Native	893	0.5%	733	0.5%
Asian	7,242	4.1%	6,279	4.4%
Native Hawaiian/ Pacific Islander	224	0.1%	183	0.1%
Other	909	0.5%	684	0.5%
Two or More Races	4,985	2.8%	3,722	2.6%
<b>Total Population</b>	<b>175,860</b>	<b>100%</b>	<b>143,401</b>	<b>100%</b>

▶ DISTRICT DEMOGRAPHICS  
**HISPANIC CITIZEN VOTING AGE POPULATION ESTIMATES**



Population	CVAP 2015-2019	
	Total	%
Hispanic/Latino	34,617	29.1%
White	71,451	60.0%
Black/ African American	5,709	4.8%
American Indian/Alaska Native	777	0.7%
Asian	4,864	4.1%
Native Hawaiian/ Pacific Islander	139	0.1%
Two or More Races	1,602	1.3%
<b>Total Population</b>	<b>119,159</b>	<b>100%</b>

# ▶ CURRENT TRUSTEE AREAS



► CURRENT TRUSTEE AREAS  
Using 2010 Census Data

Total Population	Trustee Area 1	Trustee Area 2	Trustee Area 3	Trustee Area 4	Trustee Area 5
	32,828	32,316	32,968	32,882	33,554

2010 CVAP					
Demographics	Trustee Area 1	Trustee Area 2	Trustee Area 3	Trustee Area 4	Trustee Area 5
Hispanic/Latino	34.57%	53.71%	10.06%	20.22%	37.18%
White	55.52%	33.88%	83.65%	68.67%	48.67%
Black/African American	3.08%	3.51%	2.65%	5.10%	9.69%
American Indian/Alaskan Native	0.88%	0.30%	0.48%	0.77%	0.44%
Asian	4.23%	7.51%	1.67%	3.16%	1.86%
Native Hawaiian/Other Pacific Islander	0.14%	0.27%	0.28%	0.17%	0.13%
Two or More Races	2.00%	0.92%	1.34%	1.96%	1.60%

A row of yellow school buses is parked in a grassy field under a cloudy sky. A large, semi-transparent, stylized letter 'S' is overlaid on the image, centered horizontally and vertically. The text 'Proposed Scenarios' is written in white, sans-serif font across the middle of the 'S'.

# Proposed Scenarios



# ► DISTRICT DEMOGRAPHICS

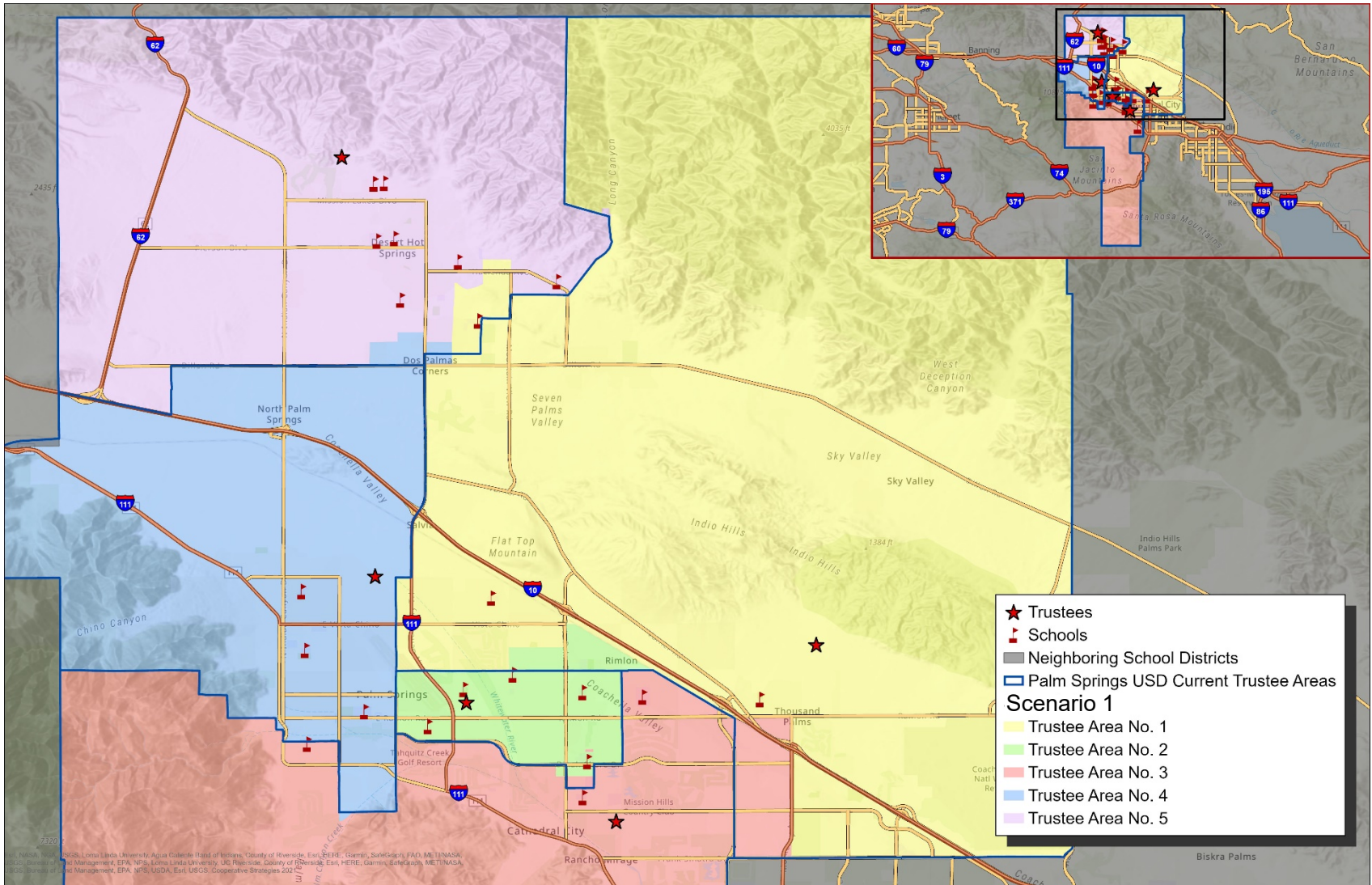
## SCENARIO 1



- Scenario 1 adjustments:
  - Trustee area #1 moves slightly into Trustee area #5
  - Trustee area #2 moves slightly into Trustee area #1
  - Trustee area #3 moves slightly into Trustee area #1 & Trustee area #2
  - Trustee area #4 moves slightly into Trustee area #5
- This scenario results in one school being removed from Trustee Area 5 and added to Trustee Area 1
- Based on CVAP data, there is one majority Hispanic Area (Trustee Area 2). This scenario preserves that majority but decreases the percentage slightly from 54.3% to 52.9%. The percentage also is decreased in Trustee Area 5 from 40.2% to 37.5%
- The overall variance is decreased from 21.8% to 4.8%

Trustee Area	2020 Census		Proposed	
	Total	Variance	Total	Variance
Trustee Area 1	37,054	5.4%	35,733	1.6%
Trustee Area 2	32,235	-8.4%	35,731	1.6%
Trustee Area 3	33,462	-4.9%	35,340	0.5%
Trustee Area 4	33,198	-5.6%	35,027	-0.4%
Trustee Area 5	39,911	13.5%	34,029	-3.2%
<b>Total</b>	<b>175,860</b>	<b>21.8%</b>	<b>175,860</b>	<b>4.8%</b>

# ▶ CONCEPTUAL TRUSTEE AREAS SCENARIO 1

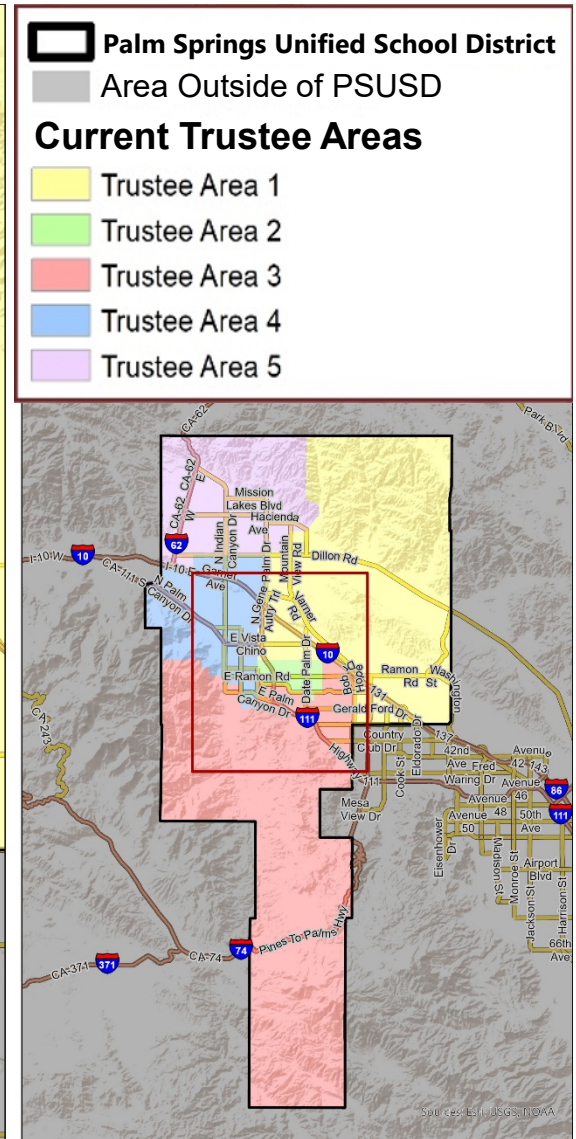
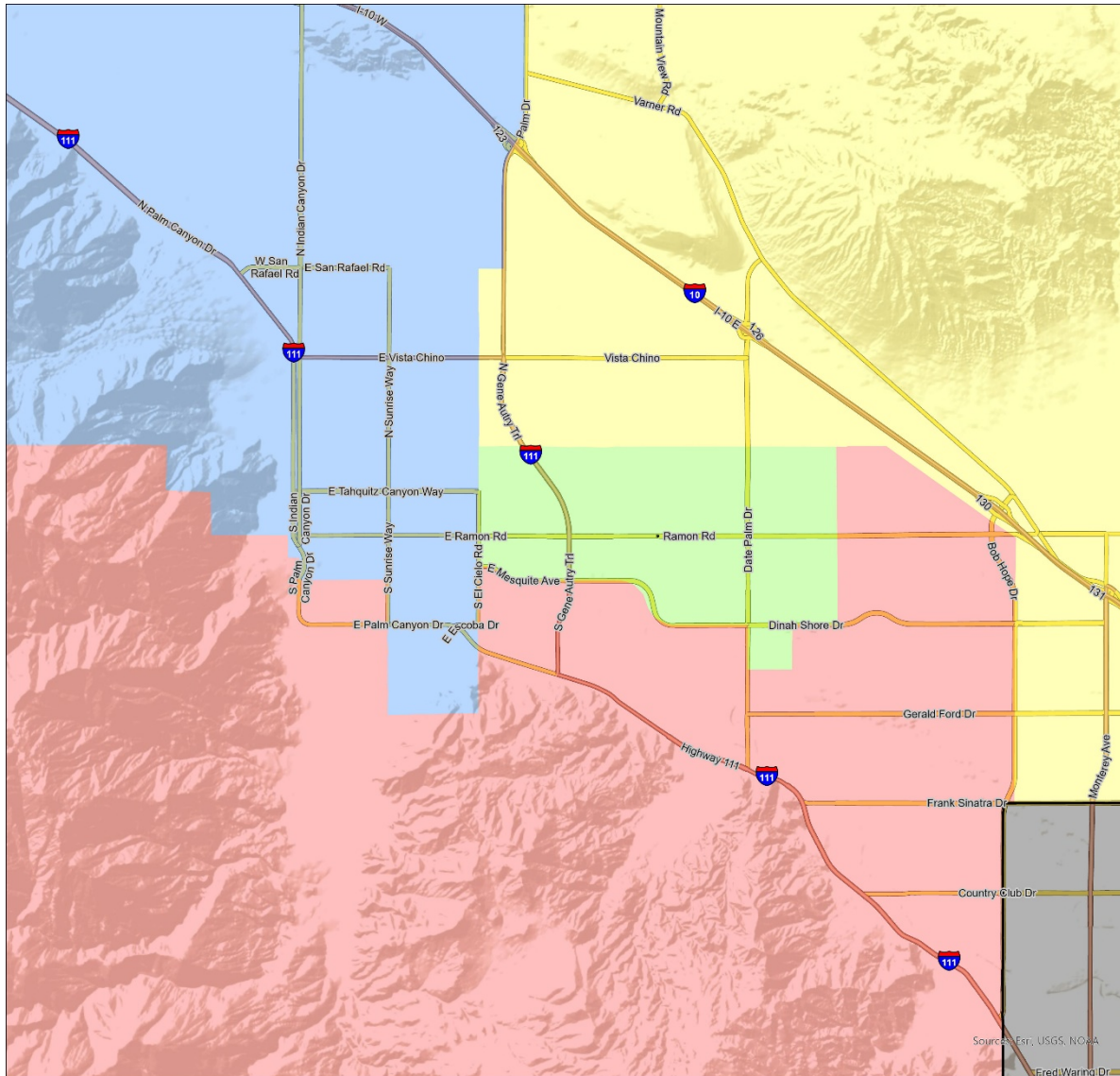


► **DEMOGRAPHICS**  
**SCENARIO 1**

<b>Total Population:</b>	<b>175,860</b>	<b>Ideal Trustee Area Size:</b>	<b>35,172</b>	<b>Variance:</b>	<b>4.8%</b>
--------------------------	----------------	---------------------------------	---------------	------------------	-------------

<b>TRUSTEE AREA</b>	<b>Trustee Area 1</b>		<b>Trustee Area 2</b>		<b>Trustee Area 3</b>		<b>Trustee Area 4</b>		<b>Trustee Area 5</b>	
<b>TP* vs. CVAP**</b>	<b>TP</b>	<b>CVAP</b>	<b>TP</b>	<b>CVAP</b>	<b>TP</b>	<b>CVAP</b>	<b>TP</b>	<b>CVAP</b>	<b>TP</b>	<b>CVAP</b>
Population	35,733	22,588	35,731	20,095	35,340	31,022	35,027	27,148	34,029	18,306
Population Variance	1.6%	N/A	1.6%	N/A	0.5%	N/A	-0.4%	N/A	-3.2%	N/A
Hispanic/Latino	49.7%	32.1%	68.7%	52.9%	19.2%	12.3%	33.1%	22.3%	59.4%	37.4%
White	39.2%	56.8%	19.3%	33.3%	71.5%	81.3%	53.5%	66.8%	27.0%	46.8%
Black/African American	2.7%	3.7%	2.0%	2.6%	2.1%	2.5%	5.0%	5.6%	6.9%	11.3%
American Indian/Alaska Native	0.5%	0.9%	0.4%	0.3%	0.5%	0.8%	0.6%	0.6%	0.5%	0.5%
Asian	4.2%	4.3%	7.1%	9.4%	3.0%	1.8%	4.0%	3.5%	2.1%	2.7%
Native Hawaiian/Other Pacific Islander	0.1%	0.0%	0.1%	0.2%	0.1%	0.1%	0.2%	0.1%	0.1%	0.1%
Other	0.5%	0.0%	0.5%	0.0%	0.5%	0.0%	0.5%	0.0%	0.6%	0.0%
Two or More Races	3.0%	2.1%	1.9%	1.2%	3.1%	1.1%	3.0%	1.2%	3.1%	1.2%

# ▶ CURRENT TRUSTEE AREAS



## ► DISTRICT DEMOGRAPHICS

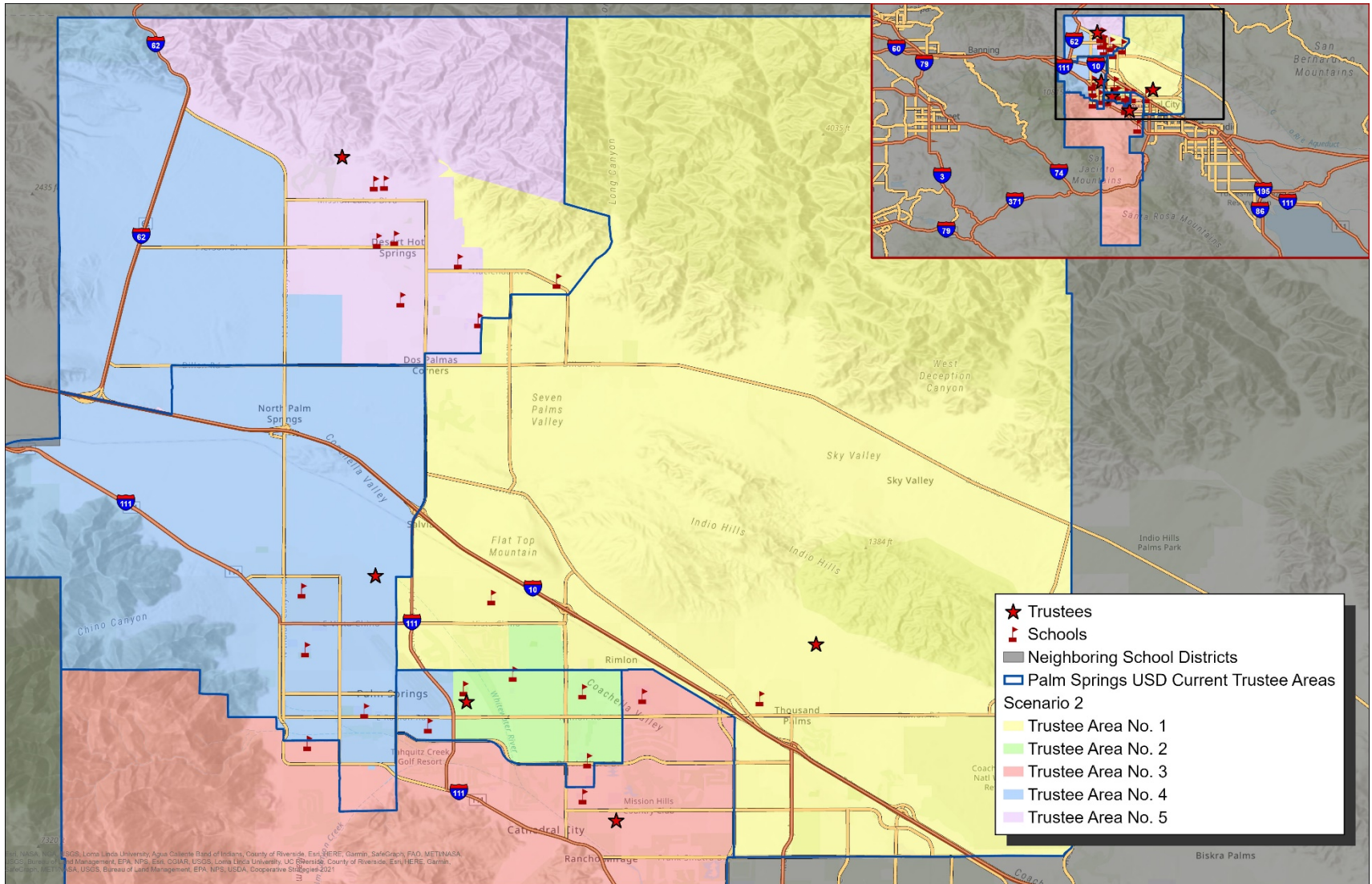
### SCENARIO 2



- Scenario 2 adjustments:
  - Trustee area #1 moves slightly into Trustee area #5
  - Trustee area #2 moves slightly into Trustee area #1
  - Trustee area #3 moves slightly into Trustee area #5 & Trustee area #2
  - Trustee area #4 moves slightly into Trustee area #5 & Trustee area #2
- This scenario results in a school being removed from each of Trustee Areas 5 and 2 and added to Trustee Areas 1 and 4 respectively
- Based on CVAP data, there is one majority Hispanic Area (Trustee Area 2). This scenario preserves that majority but decreases the percentage slightly from 54.3% to 53.7%. The percentage increases in Trustee Area 5 from 40.2% to 41.5%
- The overall variance is decreased from 21.8% to 6.5%

Trustee Area	2020 Census		Proposed	
	Total	Variance	Total	Variance
Trustee Area 1	37,054	5.4%	34,692	-1.4%
Trustee Area 2	32,235	-8.4%	35,341	0.5%
Trustee Area 3	33,462	-4.9%	36,240	3.0%
Trustee Area 4	33,198	-5.6%	35,639	1.3%
Trustee Area 5	39,911	13.5%	33,948	-3.5%
<b>Total</b>	<b>8,929</b>	<b>21.8%</b>	<b>175,860</b>	<b>6.5%</b>

# ▶ CONCEPTUAL TRUSTEE AREAS SCENARIO 2

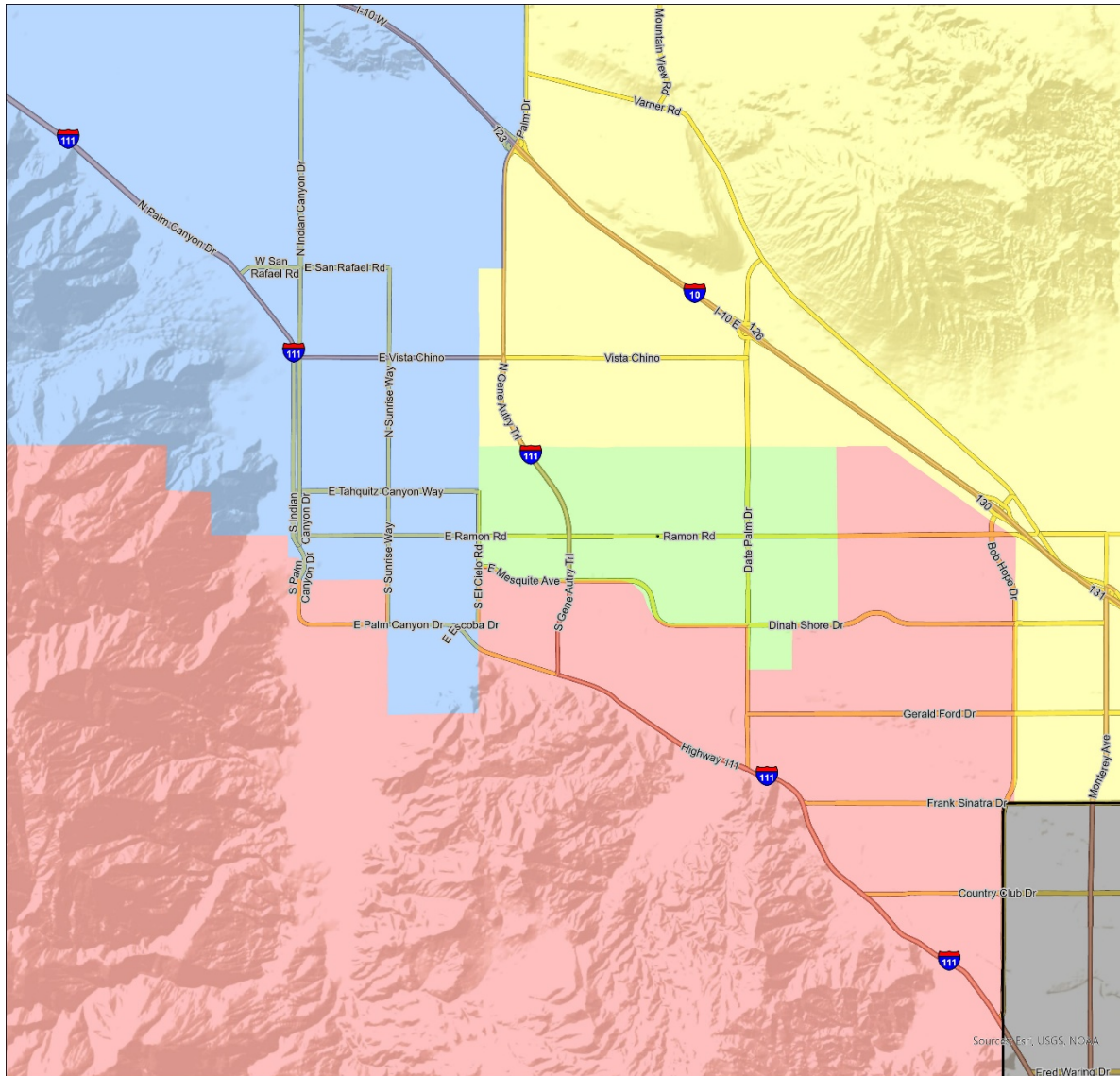


► **DEMOGRAPHICS**  
**SCENARIO 2**

<b>Total Population:</b>	<b>175,860</b>	<b>Ideal Trustee Area Size:</b>	<b>35,172</b>	<b>Variance:</b>	<b>6.5%</b>
--------------------------	----------------	---------------------------------	---------------	------------------	-------------

<b>TRUSTEE AREA</b>	<b>Trustee Area 1</b>		<b>Trustee Area 2</b>		<b>Trustee Area 3</b>		<b>Trustee Area 4</b>		<b>Trustee Area 5</b>	
<b>TP* vs. CVAP**</b>	<b>TP</b>	<b>CVAP</b>	<b>TP</b>	<b>CVAP</b>	<b>TP</b>	<b>CVAP</b>	<b>TP</b>	<b>CVAP</b>	<b>TP</b>	<b>CVAP</b>
Population	34,692	<b>21,584</b>	35,341	<b>20,482</b>	36,240	<b>31,639</b>	35,639	<b>27,504</b>	33,948	<b>17,950</b>
Population Variance	-1.4%	<b>N/A</b>	0.5%	<b>N/A</b>	3.0%	<b>N/A</b>	1.3%	<b>N/A</b>	-3.5%	<b>N/A</b>
Hispanic/Latino	45.6%	<b>28.2%</b>	69.2%	<b>53.7%</b>	20.7%	<b>13.4%</b>	32.1%	<b>21.2%</b>	63.9%	<b>41.5%</b>
White	42.3%	<b>59.9%</b>	19.3%	<b>34.3%</b>	70.3%	<b>80.4%</b>	53.6%	<b>66.7%</b>	23.9%	<b>42.9%</b>
Black/African American	3.3%	<b>4.5%</b>	2.0%	<b>2.3%</b>	2.2%	<b>2.7%</b>	5.0%	<b>5.4%</b>	6.3%	<b>10.9%</b>
American Indian/Alaska Native	0.5%	<b>1.1%</b>	0.4%	<b>0.2%</b>	0.5%	<b>0.8%</b>	0.7%	<b>0.4%</b>	0.5%	<b>0.7%</b>
Asian	4.5%	<b>4.2%</b>	6.6%	<b>8.2%</b>	2.7%	<b>1.6%</b>	4.8%	<b>4.7%</b>	1.8%	<b>2.6%</b>
Native Hawaiian/Other Pacific Islander	0.1%	<b>0.0%</b>	0.1%	<b>0.2%</b>	0.1%	<b>0.1%</b>	0.2%	<b>0.1%</b>	0.1%	<b>0.1%</b>
Other	0.4%	<b>0.0%</b>	0.5%	<b>0.0%</b>	0.5%	<b>0.0%</b>	0.6%	<b>0.0%</b>	0.6%	<b>0.0%</b>
Two or More Races	3.2%	<b>2.1%</b>	1.9%	<b>1.0%</b>	3.1%	<b>1.1%</b>	3.1%	<b>1.4%</b>	2.8%	<b>1.2%</b>

# ▶ CURRENT TRUSTEE AREAS

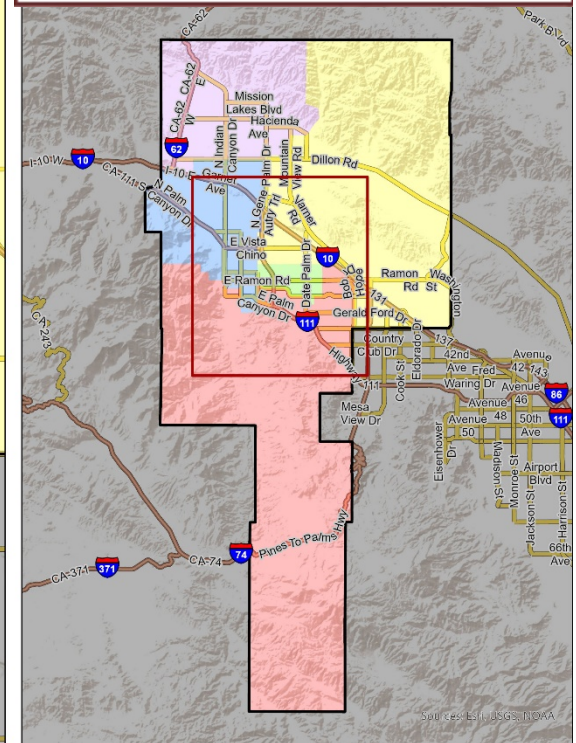


**Legend**

- Palm Springs Unified School District
- Area Outside of PSUSD

**Current Trustee Areas**

- Trustee Area 1
- Trustee Area 2
- Trustee Area 3
- Trustee Area 4
- Trustee Area 5







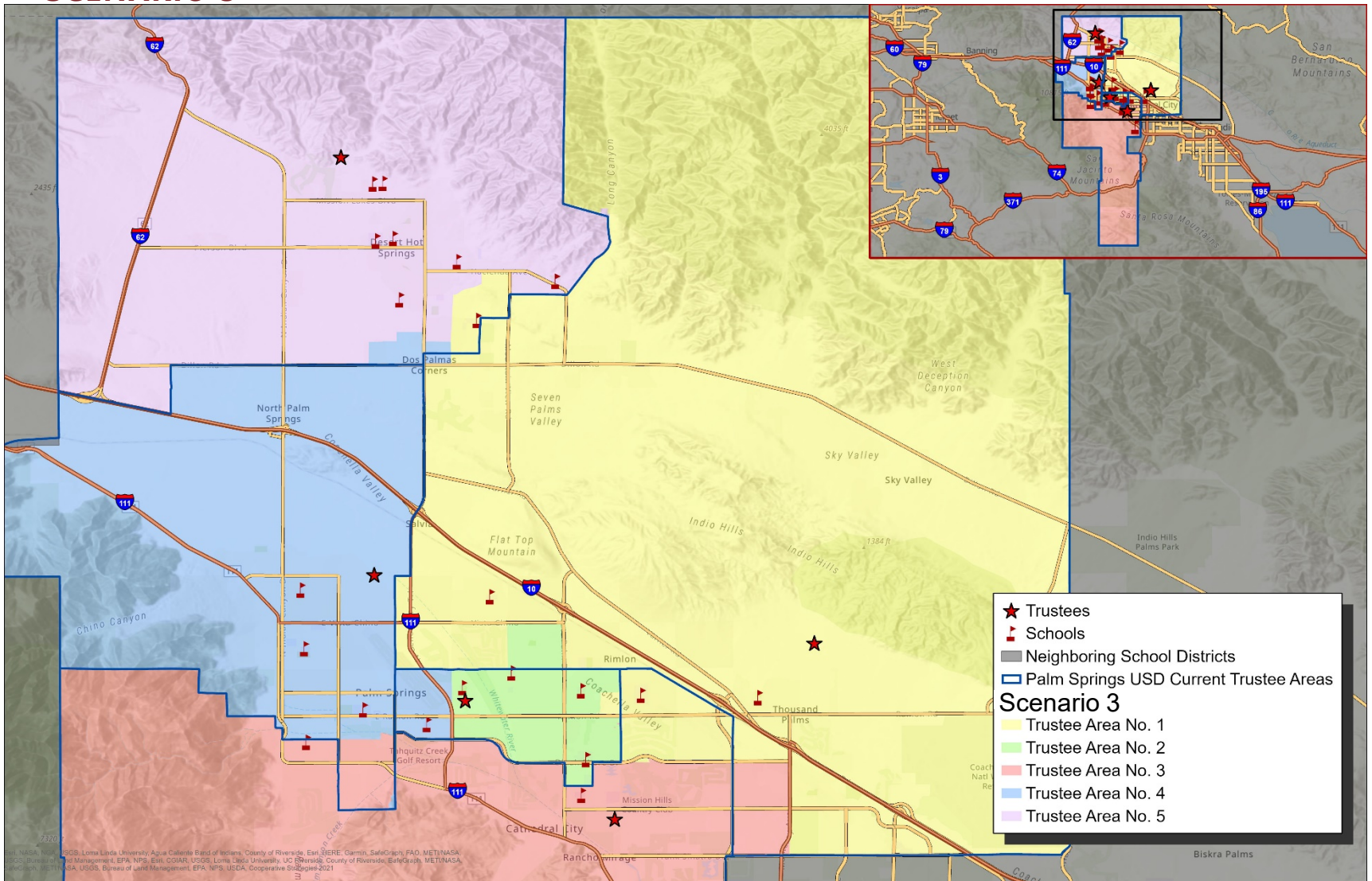
## ▶ DISTRICT DEMOGRAPHICS SCENARIO 3

- Scenario 3 adjustments:
  - Trustee area #1 moves slightly into Trustee area #3 & Trustee area #3
  - Trustee area #2 moves slightly into Trustee area #1
  - Trustee area #3 moves slightly into Trustee area #5 & Trustee area #1
  - Trustee area #4 moves slightly into Trustee area #5 & Trustee area #2
- This scenario results in one school being removed from each of Trustee Areas 4 and 3 and both added to Trustee Area 1
- Based on CVAP data, there is one majority Hispanic Area (Trustee Area 2). This scenario preserves that majority and increases the percentage slightly from 54.3% to 54.7%. The percentage decreases in Trustee Area 5 from 40.2% to 37.5%
- The overall variance is decreased from 21.8% to 8.3%

Trustee Area	2020 Census		Proposed	
	Total	Variance	Total	Variance
Trustee Area 1	37,054	5.4%	34,099	-3.1%
Trustee Area 2	32,235	-8.4%	37,023	5.3%
Trustee Area 3	33,462	-4.9%	35,827	1.9%
Trustee Area 4	33,198	-5.6%	34,358	-2.3%
Trustee Area 5	39,911	13.5%	34,553	-1.8%
<b>Total</b>	<b>175,860</b>	<b>21.8%</b>	<b>175,860</b>	<b>8.3%</b>

# ▶ CONCEPTUAL TRUSTEE AREAS

## SCENARIO 3

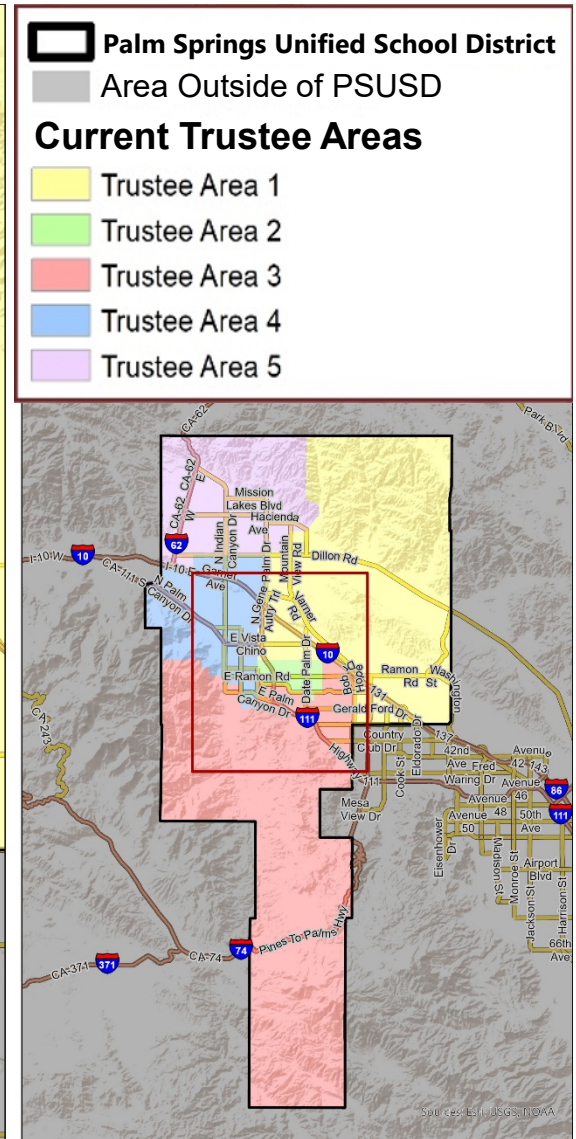
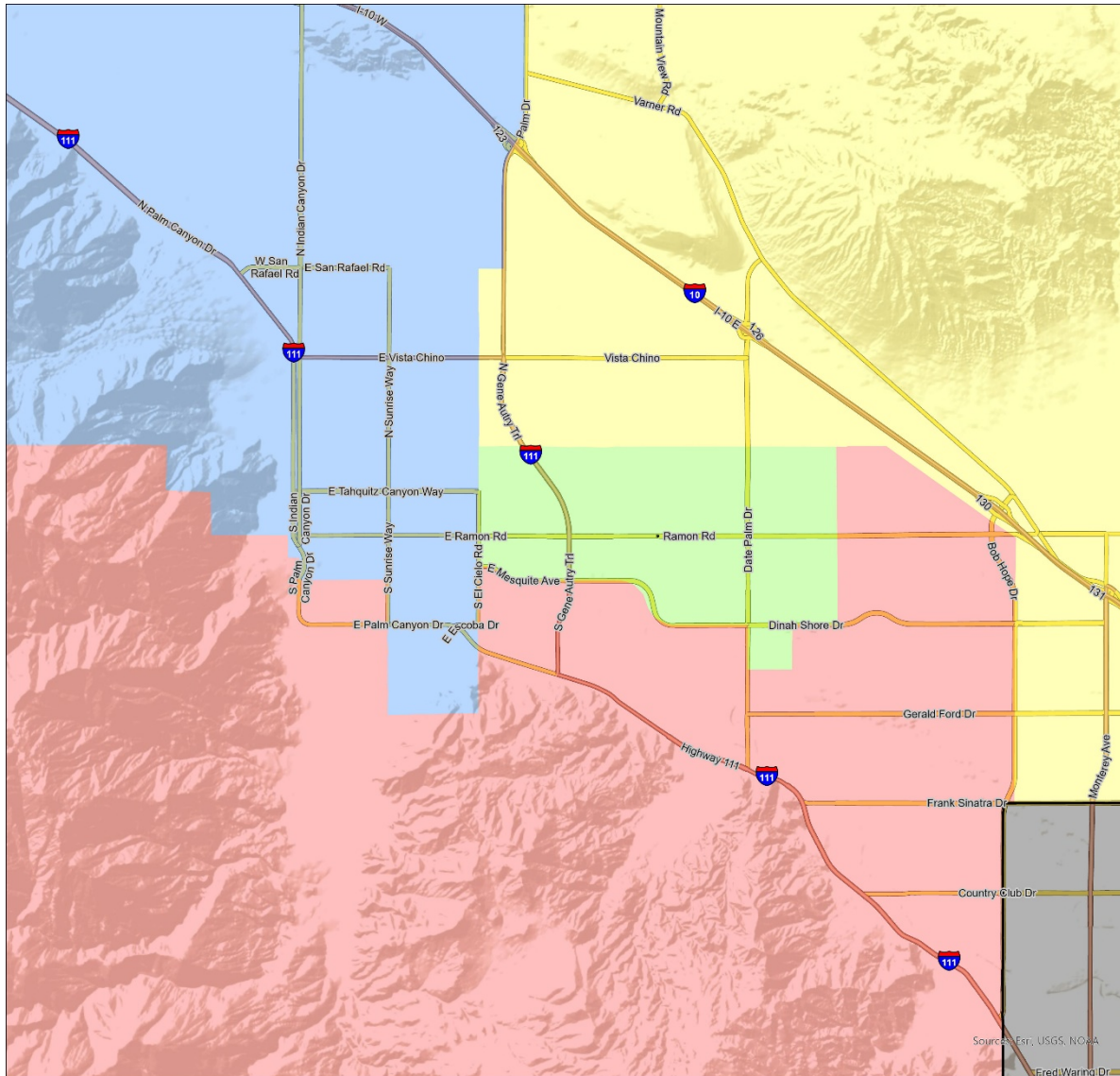


► **DEMOGRAPHICS**  
**SCENARIO 3**

<b>Total Population:</b>	<b>175,860</b>	<b>Ideal Trustee Area Size:</b>	<b>35,172</b>	<b>Variance:</b>	<b>8.3%</b>
--------------------------	----------------	---------------------------------	---------------	------------------	-------------

<b>TRUSTEE AREA</b>	<b>Trustee Area 1</b>		<b>Trustee Area 2</b>		<b>Trustee Area 3</b>		<b>Trustee Area 4</b>		<b>Trustee Area 5</b>	
<b>TP* vs. CVAP**</b>	<b>TP</b>	<b>CVAP</b>	<b>TP</b>	<b>CVAP</b>	<b>TP</b>	<b>CVAP</b>	<b>TP</b>	<b>CVAP</b>	<b>TP</b>	<b>CVAP</b>
Population	34,099	<b>21,358</b>	37,023	<b>21,242</b>	35,827	<b>32,220</b>	34,358	<b>25,778</b>	34,553	<b>18,561</b>
Population Variance	-3.1%	<b>N/A</b>	5.3%	<b>N/A</b>	1.9%	<b>N/A</b>	-2.3%	<b>N/A</b>	-1.8%	<b>N/A</b>
Hispanic/Latino	46.4%	<b>29.0%</b>	69.8%	<b>54.7%</b>	17.9%	<b>12.1%</b>	35.6%	<b>23.0%</b>	59.5%	<b>37.5%</b>
White	42.6%	<b>59.9%</b>	19.0%	<b>33.6%</b>	72.4%	<b>81.4%</b>	50.4%	<b>64.6%</b>	26.9%	<b>46.6%</b>
Black/African American	2.7%	<b>3.9%</b>	2.0%	<b>2.3%</b>	2.2%	<b>2.6%</b>	5.1%	<b>5.6%</b>	6.9%	<b>11.3%</b>
American Indian/Alaska Native	0.5%	<b>1.1%</b>	0.4%	<b>0.1%</b>	0.5%	<b>0.8%</b>	0.6%	<b>0.6%</b>	0.5%	<b>0.5%</b>
Asian	4.3%	<b>3.8%</b>	6.3%	<b>8.0%</b>	3.2%	<b>2.0%</b>	4.6%	<b>4.8%</b>	2.1%	<b>2.7%</b>
Native Hawaiian/Other Pacific Islander	0.2%	<b>0.0%</b>	0.1%	<b>0.2%</b>	0.1%	<b>0.1%</b>	0.2%	<b>0.1%</b>	0.2%	<b>0.1%</b>
Other	0.4%	<b>0.0%</b>	0.5%	<b>0.0%</b>	0.5%	<b>0.0%</b>	0.6%	<b>0.0%</b>	0.6%	<b>0.0%</b>
Two or More Races	3.0%	<b>2.3%</b>	1.9%	<b>1.1%</b>	3.2%	<b>1.0%</b>	2.9%	<b>1.4%</b>	3.2%	<b>1.2%</b>

# ▶ CURRENT TRUSTEE AREAS



**Legend**

- Palm Springs Unified School District
- Area Outside of PSUSD

**Current Trustee Areas**

- Trustee Area 1
- Trustee Area 2
- Trustee Area 3
- Trustee Area 4
- Trustee Area 5

## ► DISTRICT DEMOGRAPHICS

### SCENARIO 4

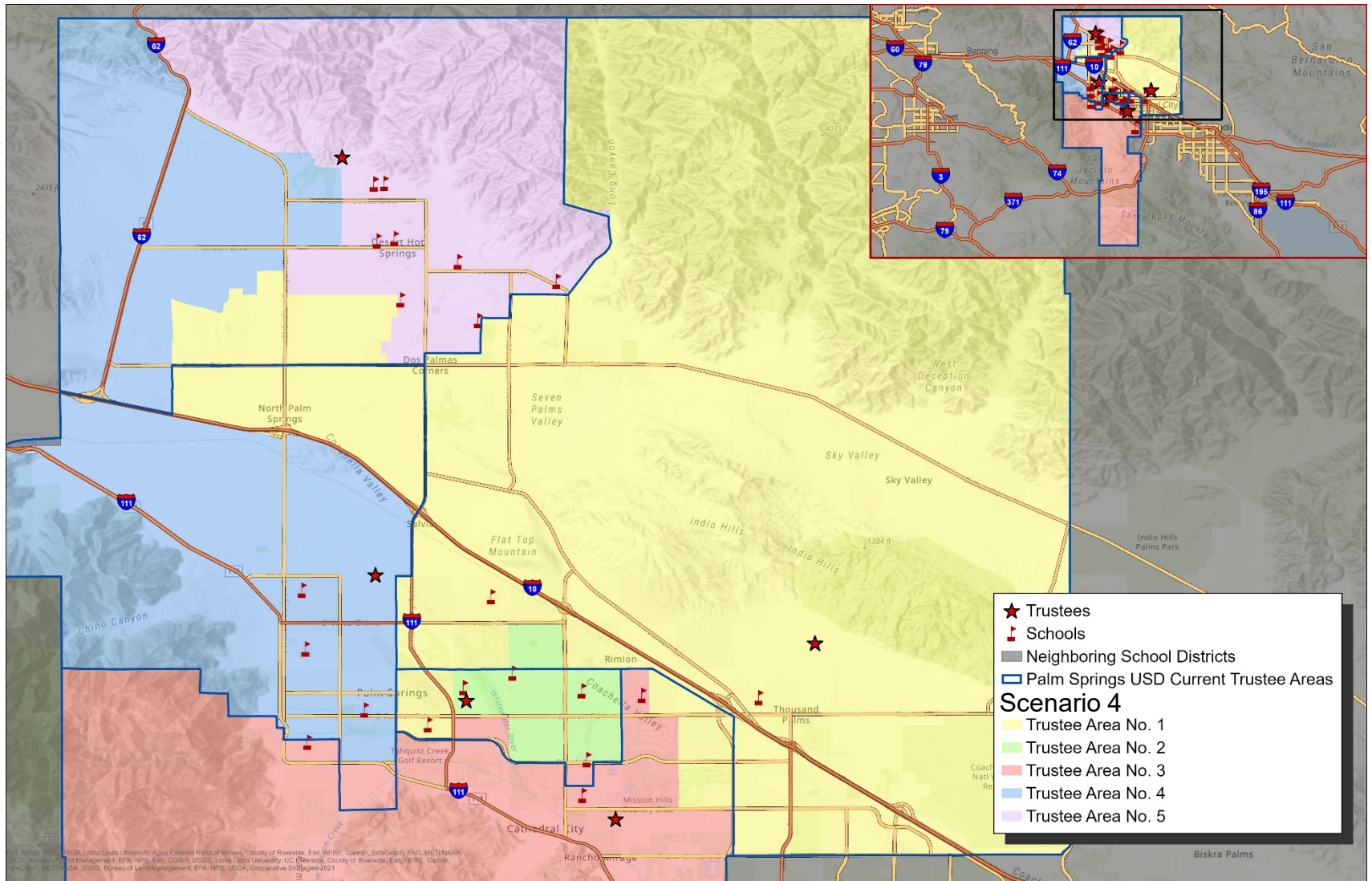


- Scenario 4 adjustments:
  - Trustee area #1 moves slightly into Trustee area #2, Trustee area #3, & Trustee area #4, & Trustee area #5
  - Trustee area #2 moves slightly into Trustee area #1
  - Trustee area #3 moves slightly into Trustee area #2 & Trustee area #5
  - Trustee area #4 moves slightly into Trustee area #5 & Trustee area #3
- This scenario results in one school being removed from Trustee Area 2 and added to Trustee Area 1
- Based on CVAP data, there is one majority Hispanic Area (Trustee Area 2). This scenario preserves that majority but decreases the percentage slightly from 54.3% to 53.7%. The percentage increases in Trustee Area 5 from 40.2% to 43.5%
- The overall variance is decreased from 21.8% to 4.7%

Trustee Area	2020 Census		Proposed	
	Total	Variance	Total	Variance
Trustee Area 1	37,054	5.4%	35,220	0.1%
Trustee Area 2	32,235	-8.4%	35,341	0.5%
Trustee Area 3	33,462	-4.9%	34,778	-1.1%
Trustee Area 4	33,198	-5.6%	34,440	-2.1%
Trustee Area 5	39,911	13.5%	36,081	2.6%
<b>Total</b>	<b>175,860</b>	<b>21.8%</b>	<b>175,860</b>	<b>4.7%</b>

# ▶ CONCEPTUAL TRUSTEE AREAS

## SCENARIO 4



► DEMOGRAPHICS  
SCENARIO 4

Total Population:	175,860	Ideal Trustee Area Size:	35,172	Variance:	4.7%
-------------------	---------	--------------------------	--------	-----------	------

TRUSTEE AREA	Trustee Area 1		Trustee Area 2		Trustee Area 3		Trustee Area 4		Trustee Area 5	
TP* vs. CVAP**	TP	CVAP	TP	CVAP	TP	CVAP	TP	CVAP	TP	CVAP
Population	35,220	22,772	35,341	20,482	34,778	30,434	34,440	26,893	36,081	18,578
Population Variance	0.1%	N/A	0.5%	N/A	-1.1%	N/A	-2.1%	N/A	2.6%	N/A
Hispanic/Latino	43.7%	26.5%	69.2%	53.7%	21.4%	14.1%	29.5%	19.4%	65.0%	43.5%
White	44.5%	61.8%	19.3%	34.3%	69.5%	79.6%	56.6%	69.9%	22.2%	39.6%
Black/African American	2.3%	2.8%	2.0%	2.3%	2.2%	2.8%	5.2%	5.3%	6.9%	12.4%
American Indian/Alaska Native	0.5%	1.1%	0.4%	0.2%	0.5%	0.8%	0.7%	0.5%	0.5%	0.6%
Asian	5.3%	5.8%	6.6%	8.2%	2.7%	1.5%	4.1%	3.5%	1.8%	2.5%
Native Hawaiian/Other Pacific Islander	0.1%	0.0%	0.1%	0.2%	0.1%	0.1%	0.2%	0.1%	0.2%	0.1%
Other	0.4%	0.0%	0.5%	0.0%	0.4%	0.0%	0.6%	0.0%	0.6%	0.0%
Two or More Races	3.1%	2.1%	1.9%	1.0%	3.1%	1.0%	3.2%	1.3%	2.9%	1.3%



# QUESTIONS